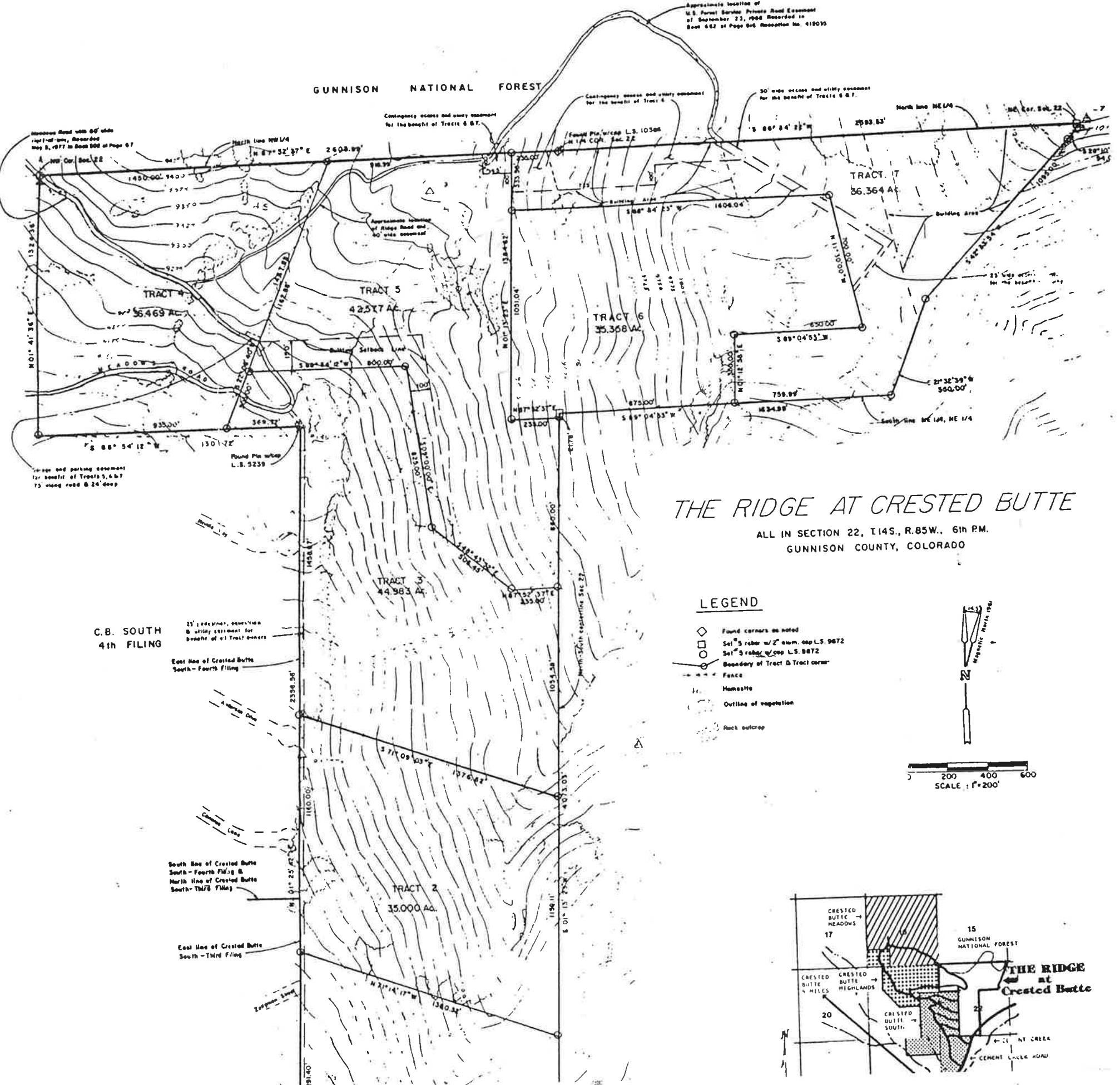


GUNNISON NATIONAL FOREST

Approximate location of
U.S. Forest Service Private Road Easement
of September 23, 1908 Recorded in
Book 662 of Page 646 Reconnection No. 418035

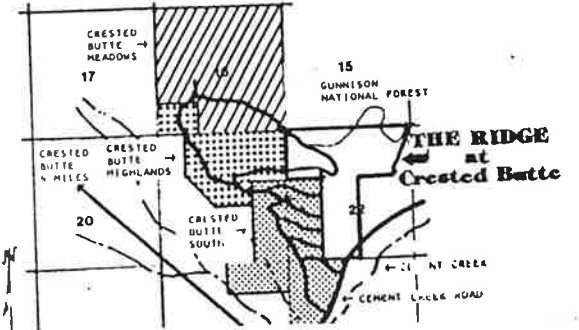
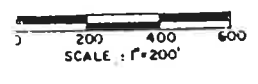
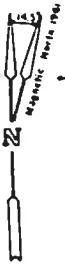


THE RIDGE AT CRESTED BUTTE

ALL IN SECTION 22, T.14S, R.85W., 6th PM.
GUNNISON COUNTY, COLORADO

LEGEND

- Found corners as noted
- Set 5 rebar w/2" diam. cap L.S. 9872
- Set 5 rebar w/cap L.S. 9872
- Boundary of Tract & Tract corner
- Fence
- Homestead
- Outline of vegetation
- Rock outcrop



C.B. SOUTH
4th FILING

25' easement, easement
& utility easement for
benefit of all Tract owners

East line of Crested Butte
South-Fourth Filing

South line of Crested Butte
South-Fourth Filing &
North line of Crested Butte
South-Third Filing

East line of Crested Butte
South-Third Filing