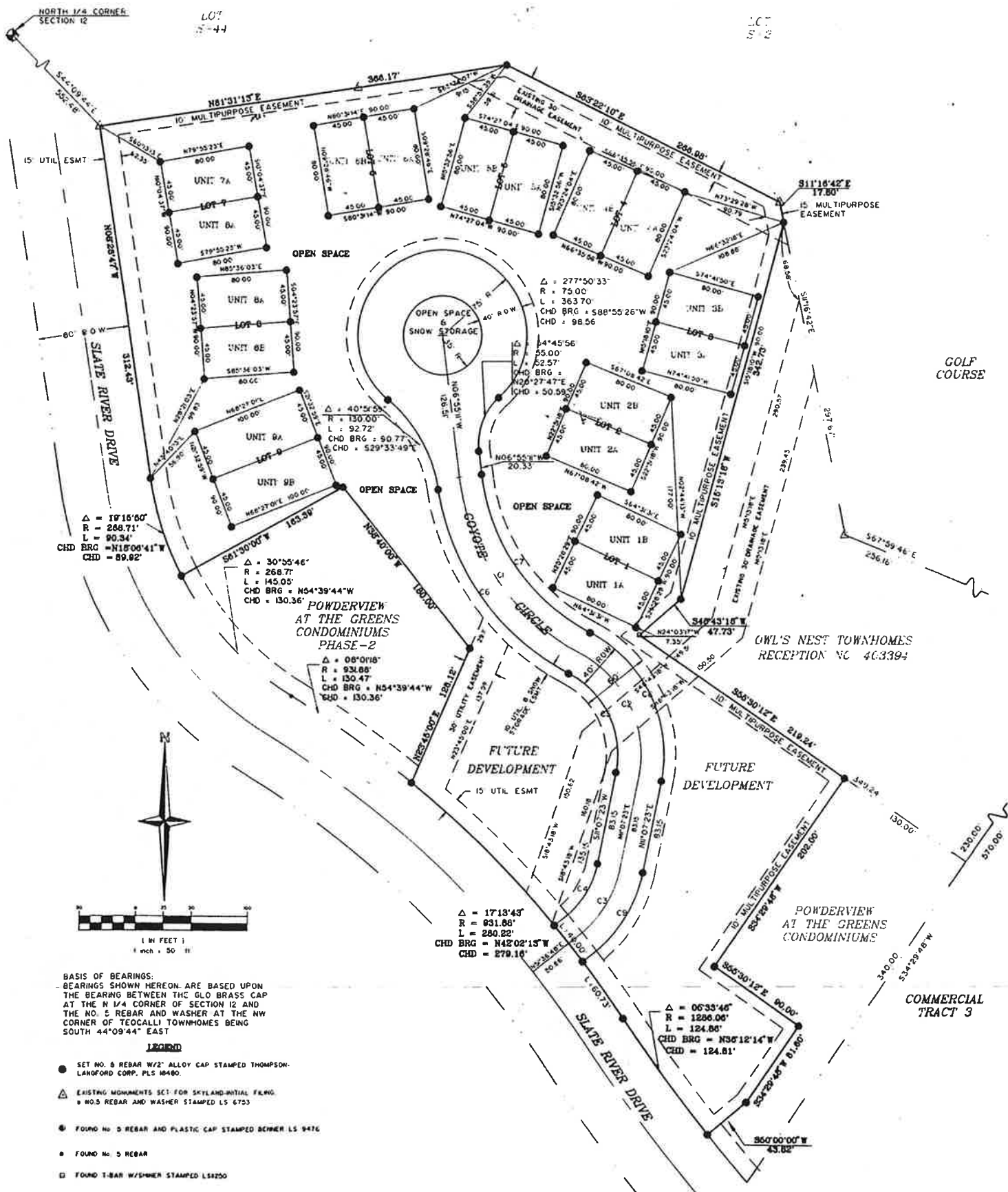


MAP OF TEOCALLI TOWNHOMES



BASIS OF BEARINGS:
BEARINGS SHOWN HEREON ARE BASED UPON THE BEARING BETWEEN THE GLO BRASS CAP AT THE N 1/4 CORNER OF SECTION 12 AND THE NO. 5 REBAR AND WASHER AT THE NW CORNER OF TEOCALLI TOWNHOMES BEING SOUTH 44°09'44" EAST

- LEGEND**
- SET NO. 5 REBAR W/2" ALLOY CAP STAMPED THOMPSON-LANFORD CORP. PLS 10480.
 - ▲ EXISTING MONUMENTS SET FOR SKYLAND-INITIAL F&NG. 1 NO. 5 REBAR AND WASHER STAMPED LS 6753
 - FOUND NO. 5 REBAR AND PLASTIC CAP STAMPED BOMER LS 9476
 - FOUND NO. 5 REBAR
 - FOUND T-BAR W/SPINNER STAMPED LS4250

NOTICE:
According to Colorado law you must commence any legal action based upon any defect in this survey within three years after you first discover such defect. In no event, may any action based upon any defect in this survey be commenced more than ten years from the