

GUNNISON NATIONAL FOREST
 N 00°20'16" W 2645.00'

Easterly Line Lot VI, N. L. & L. VII, Section 6

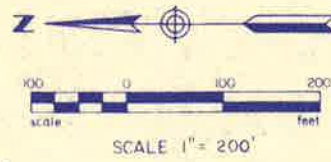
SECTION 6

SE Corner, Lot VII
 Section 6

Easterly Line Lot I, Section 7
 N 00°09'00" W 582.52'

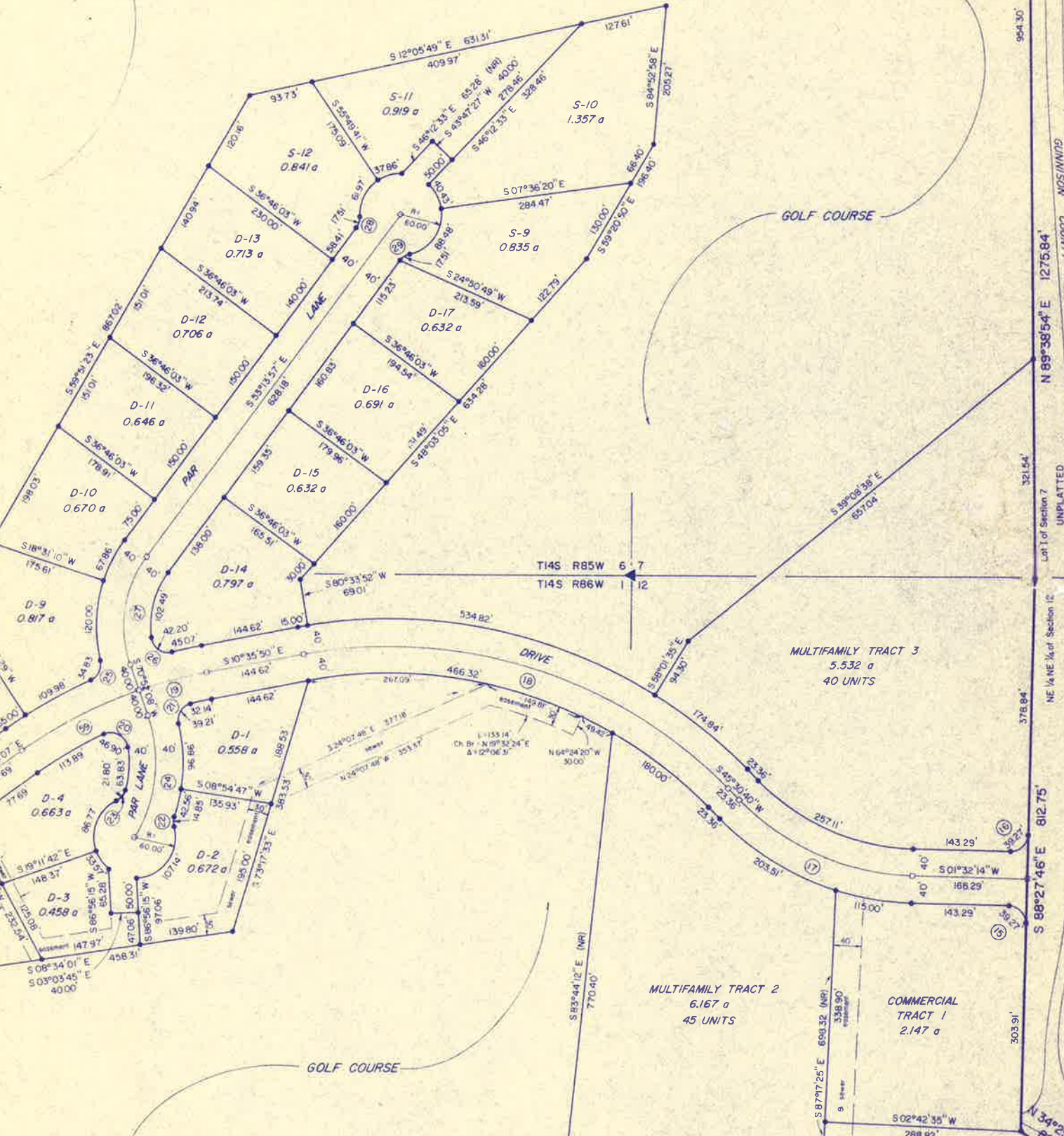
UNPLATTED
 SECTION 7

SKYLAND - Initial Filing



GOLF COURSE

Basis of Bearing
 N 00°17'32" E (Solar)
 2646.91'



N 89°38'54" E 1275.84'
 GUNNISON COUNTY ROAD NO. 738
 BACK 268 PAGE 382
 UNPLATTED
 Lot I of Section 7
 NE 1/4 Sec 7 of Section 12

N 86°27'46" E 812.75'
 BRONCO CREEK ROAD

FUTURE FILING

CLUBHOUSE TRACT
 4.746 a

MULTIFAMILY TRACT 2
 6.167 a
 45 UNITS

COMMERCIAL TRACT 1
 2.147 a

MULTIFAMILY TRACT 3
 5.532 a
 40 UNITS

MULTIFAMILY TRACT 4
 6.425 a
 65 UNITS

MULTIFAMILY TRACT 5
 5.462 a

SEE SHEET 6 OF 6 FOR
 EASEMENT DIMENSIONS
 MATCH SHEET 6

R = 335.00'
 Δ = 47°00'17"
 Ch B = S 01°29'28" E
 Ch L = 267.19'

R = 235.98'
 Δ = 47°00'00"
 Ch B = S 14°44'33" E
 Ch L = 188.19'

R = 155.14'
 Ch B = N 89°32'24" E
 Δ = 92°06'31"

North Line, Lot VI,
 Section 6

E 1/4 Corner, Section 1
 S 29°23'46" W
 1790'

MATCH SHEET 6