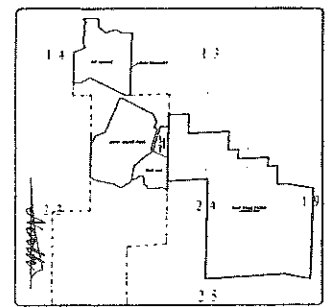
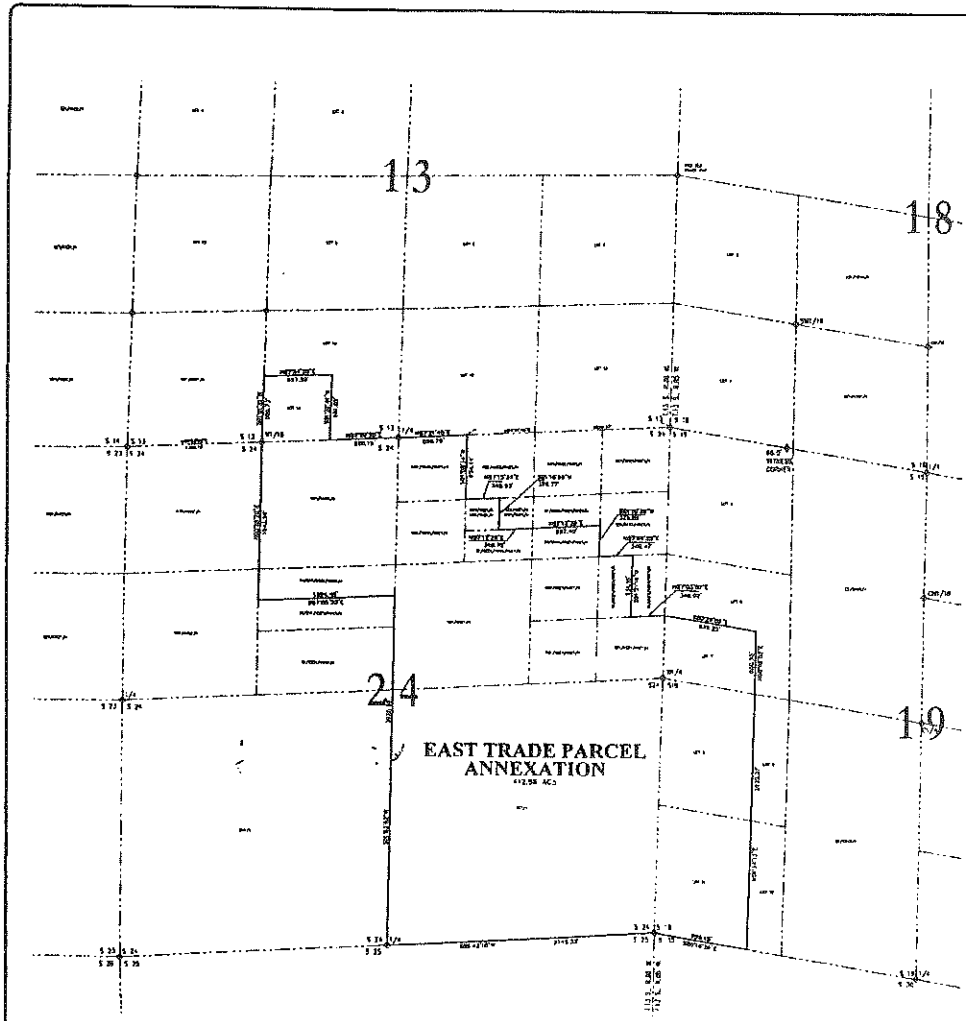


# EAST TRADE PARCEL ANNEXATION



**LEGAL DESCRIPTION**

Section 13, Township 13 South, Range 88 West, Lot 14.

Section 24, Township 13 South, Range 88 West, NE 1/4sec 1/a, NE 1/4sec 2/a, NE 1/4sec 3/a, NE 1/4sec 4/a, SE 1/4sec 1/a, SE 1/4sec 2/a, SE 1/4sec 3/a, SE 1/4sec 4/a, SW 1/4sec 1/a, SW 1/4sec 2/a, SW 1/4sec 3/a, SW 1/4sec 4/a.

Section 19, Township 13 South, Range 88 West, Lot 7, lot 8, & lot 11.

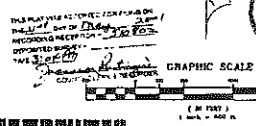
Containing 478.88 acres, more or less.

County of Gunnison, State of Colorado.

**LEGEND**

◆ INDICATES FOUND BLM GRADE ELEV.

*Scott*



© 1999 SGM  
 SGM  
 SCHLESIER GORDON MEYER INC.  
 135 W. 8th Street, Suite 200  
 Greenwood Springs, Colorado 80601  
 970 845-5004 FAX 945-5040  
 Aspen, Colorado 81701 926-9727  
 327@sgm-inc.com

**SGM** SURVEYORS ENGINEERS  
 SCHLESIER GORDON MEYER INC.  
 135 W. 8th Street, Suite 200  
 Greenwood Springs, Colorado 80601  
 970 845-5004 FAX 945-5040  
 Aspen, Colorado 81701 926-9727  
 327@sgm-inc.com

*EAST TRADE PARCEL*

NO.	DESCRIPTION	DATE	BY

*ANNEXATION*

Job No. 990879-02  
 Project No. T&E  
 Date: 28Aug2000  
 Date: 02  
 Scale: 1" = 400.0'  
 1 of 1