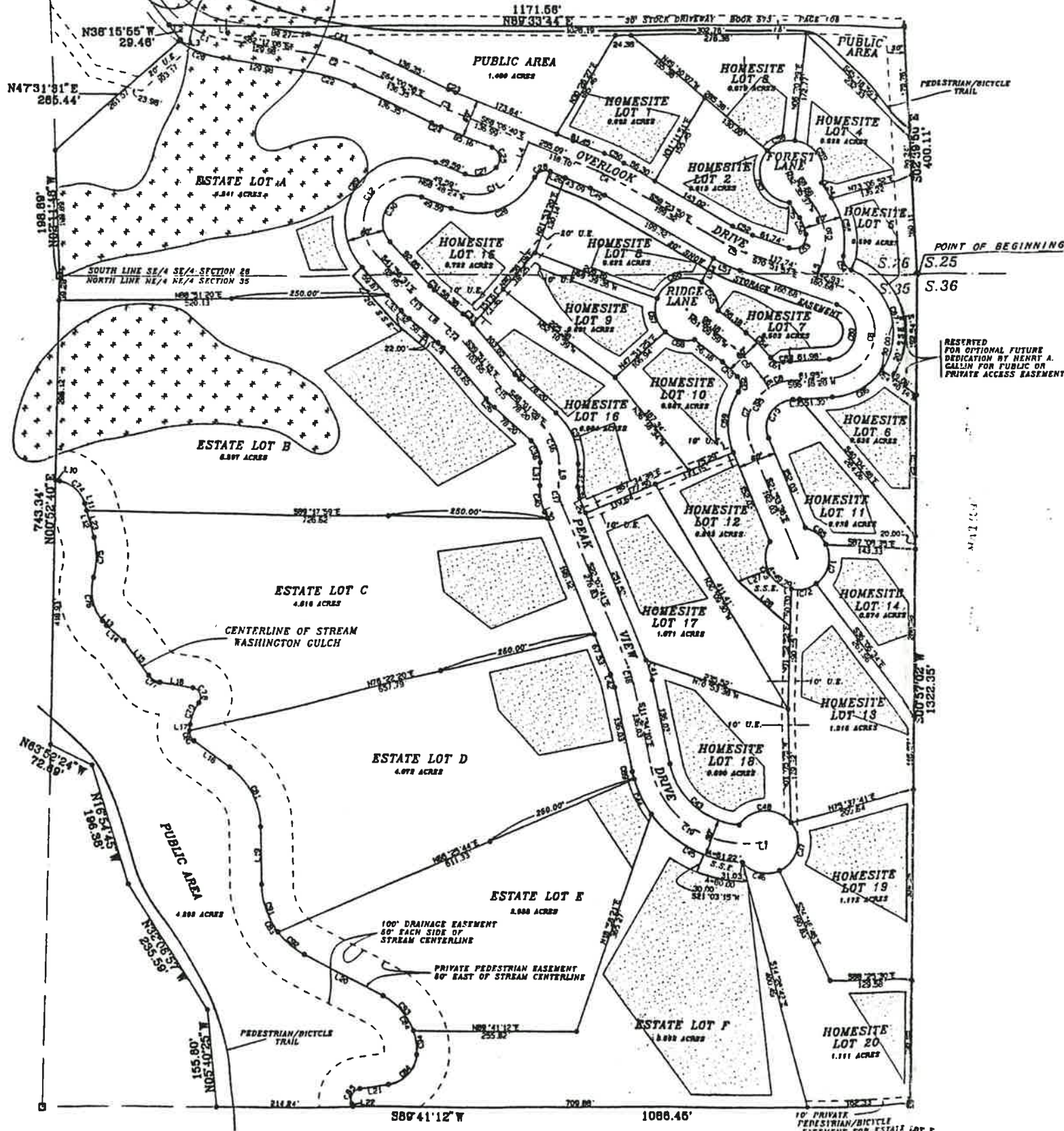


# PLAT OF OVERLOOK AT MT. CRESTED BUTTE

THE SUMMIT



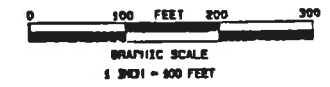
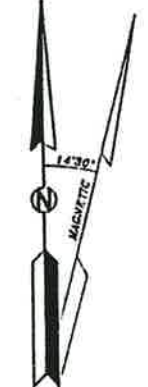
CURVE TABLE

ARC	RADIUS	DELTA	CHORD BEARING	CHORD	
C1	64.98	150.00	24°49'19"	M69°52'27"W	64.48
C2	95.88	300.00	18°18'08"	M73°09'02"W	75.25
C3	14.29	200.00	04°05'22"	M66°03'49"W	14.29
C4	30.42	200.00	08°42'50"	M63°43'13"W	30.39
C5	40.03	200.00	11°28'07"	M65°07'54"W	39.97
C6	205.70	75.00	157°08'25"	M07°42'18"E	147.03
C7	103.03	75.00	78°42'37"	M17°27'43"E	95.12
C8	38.56	75.00	29°27'27"	M11°32'45"E	38.14
C9	62.77	200.00	17°29'00"	M42°10'29"W	62.52
C10	90.28	100.00	31°43'40"	M08°33'47"E	87.25
C11	200.00	75.00	89°18'18"	M66°32'28"W	129.42
C12	13.26	100.00	07°48'42"	M45°49'02"E	13.27
C13	17.22	100.00	09°51'58"	M44°47'14"E	17.20
C14	14.26	100.00	06°10'13"	M43°58'21"E	14.23
C15	84.67	75.00	49°24'28"	M23°19'14"E	62.69
C16	30.78	75.00	23°30'41"	M10°22'21"E	30.58
C17	27.64	150.00	19°33'31"	M18°30'55"E	27.70
C18	227.89	150.00	87°02'49"	M35°05'34"E	208.60
C19	78.07	180.00	24°12'52"	M70°10'40"E	75.51
C20	105.22	330.00	18°18'08"	M73°09'02"W	104.78
C21	96.09	270.00	18°18'08"	M73°09'02"E	85.73
C22	12.15	170.00	04°05'42"	M66°03'49"E	12.15
C23	18.44	230.00	04°05'42"	M66°03'49"E	18.44
C24	29.10	20.00	112°01'25"	M12°05'57"E	33.17
C25	29.91	20.00	89°41'58"	M68°02'22"E	29.70
C26	22.91	45.00	87°18'51"	M77°33'11"W	49.88
C27	125.78	105.00	85°00'32"	M68°41'30"E	141.88
C28	290.64	105.00	153°08'07"	M34°37'32"W	204.26
C29	120.27	45.00	153°08'07"	M34°37'32"W	87.54
C30	9.50	70.00	07°46'42"	M45°49'02"E	9.50
C31	17.65	130.00	07°46'42"	M45°49'02"E	17.63
C32	22.39	130.00	09°51'58"	M44°47'14"E	22.36
C33	12.05	70.00	08°10'13"	M43°58'21"E	12.04
C34	9.28	70.00	08°10'13"	M43°58'21"E	9.27
C35	18.54	130.00	08°10'13"	M43°58'21"E	18.52
C36	90.54	105.00	49°24'28"	M23°19'14"W	87.76
C37	36.80	45.00	49°24'28"	M23°19'14"W	37.61
C38	18.47	45.00	23°30'41"	M10°22'21"E	18.34
C39	43.09	105.00	23°30'41"	M10°22'21"E	42.79
C40	33.17	180.00	10°33'31"	M18°30'55"W	33.18
C41	22.11	120.00	10°33'31"	M18°30'55"W	22.08
C42	154.78	120.00	73°04'17"	M48°31'18"E	144.28
C43	82.55	180.00	19°54'39"	M25°28'03"W	62.24
C44	166.84	180.00	53°02'35"	M81°54'40"W	160.75
C45	83.20	50.00	72°25'33"	M77°44'13"W	59.08
C46	91.47	50.00	104°49'15"	M13°38'23"W	79.24
C47	84.53	50.00	108°19'36"	M07°03'56"E	81.07
C48	29.85	170.00	08°42'50"	M63°43'13"E	29.83
C49	34.99	230.00	08°42'50"	M63°43'13"E	34.95
C50	46.04	230.00	11°28'07"	M65°07'54"E	45.96
C51	34.03	170.00	11°28'07"	M65°07'54"E	33.97
C52	41.31	20.00	118°21'14"	M49°57'26"W	34.35
C53	27.42	20.00	78°33'08"	M29°12'32"E	25.32
C54	96.79	130.00	42°39'40"	M11°15'48"E	94.57
C55	28.56	70.00	23°22'26"	M20°54'24"E	28.36
C56	110.44	50.00	126°33'19"	M22°28'48"E	89.32
C57	48.44	50.00	98°30'45"	M68°15'18"E	48.57
C58	96.82	50.00	104°11'32"	M31°33'39"W	78.90
C59	123.42	45.00	157°08'25"	M07°42'18"W	86.22
C60	21.83	20.00	62°32'27"	M68°40'22"E	20.16
C61	25.36	20.00	72°39'14"	M53°35'35"E	23.70
C62	33.32	170.00	11°13'47"	M45°33'06"E	33.27
C63	55.25	230.00	11°13'47"	M45°33'06"E	55.12
C64	55.03	50.00	63°03'39"	M28°34'00"W	52.30
C65	86.01	50.00	98°33'46"	M09°37'17"E	79.78
C66	38.56	50.00	87°13'18"	M13°18'10"W	38.55
C67	50.10	50.00	57°24'53"	M75°35'20"E	48.03
C68	100.08	105.00	54°36'38"	M05°24'43"E	96.33
C69	84.25	45.00	108°10'04"	M32°11'26"E	72.89
C70	89.30	50.00	79°24'49"	M14°11'02"W	63.89
C71	41.15	50.00	47°09'23"	M77°29'08"E	40.00
C72	96.16	50.00	110°11'24"	M23°51'29"W	82.01
C73	35.88	48.28	88°18'35"	M48°11'06"E	35.81
C74	64.25	120.00	80°40'33"	M00°18'28"E	53.46
C75	74.53	77.88	54°15'16"	M11°28'54"E	71.01
C76	21.42	28.82	45°35'02"	M58°20'22"E	20.85
C77	30.25	14.81	117°02'58"	M22°38'29"E	29.26
C78	37.88	73.92	29°11'29"	M21°19'19"W	37.25
C79	18.78	17.56	81°16'38"	M23°54'44"E	17.97
C80	108.96	117.69	23°31'54"	M27°47'08"E	108.01
C81	138.28	129.05	80°29'25"	M31°18'53"E	130.05
C82	113.29	100.84	84°33'03"	M29°14'02"E	107.48
C83	10.14	91.05	78°43'40"	M42°24'19"W	64.75
C84	30.85	18.67	105°19'21"	M29°08'29"W	28.52
C85	93.61	105.00	51°04'42"	M60°44'07"E	90.54
C86	190.01	105.00	103°40'52"	M18°38'40"W	185.12
C87	12.28	180.00	03°54'33"	M13°31'28"W	12.28
C88	11.39	105.00	06°13'04"	M63°09'58"E	11.39
C89	81.00	129.05	29°19'28"	M49°14'35"E	79.67
C90	25.26	129.05	24°31'58"	M49°14'35"E	24.84
C91	74.53	100.84	42°25'54"	M40°17'57"E	72.84
C92	38.85	100.64	22°07'09"	M08°01'05"E	38.61
C93	141.59	75.00	108°10'04"	M32°11'28"W	121.48
C94	43.20	50.00	49°30'01"	M50°16'23"W	41.67

LINE TABLE

LINE	DISTANCE	BEARING
L1	115.83	M69°52'27"W
L2	28.54	M69°52'27"W
L3	4.37	M47°31'31"W
L4	40.63	M21°53'20"W
L5	28.23	M18°08'03"W
L6	21.48	M33°10'59"W
L7	10.15	M81°23'01"E
L8	58.58	M49°56'26"E
L9	38.40	M81°07'53"W
L10	6.81	M81°20'34"W
L11	11.53	M15°01'49"W
L12	55.61	M15°01'49"E
L13	8.83	M36°38'32"W
L14	35.80	M49°56'26"E
L15	66.51	M25°35'51"W
L16	52.35	M81°07'53"W
L17	9.82	M08°43'35"E
L18	69.58	M34°33'03"E
L19	92.55	M01°01'09"E
L20	140.90	M81°20'34"E
L21	44.78	M81°48'09"E
L22	5.34	M23°33'11"E
L23	44.08	M15°01'49"W
L24	38.68	M39°25'37"W
L25	28.88	M32°30'37"E
L26	25.35	M68°06'40"E
L27	50.00	M68°06'40"E
L28	108.39	M48°38'51"W
L29	25.31	M22°07'41"E
L30	11.18	M22°07'41"W
L31	38.40	M01°23'00"W
L32	28.40	M01°23'00"E
L33	32.88	M41°58'31"E
L34	41.60	M28°59'17"E
L35	10.87	M08°16'28"E

DIRECTIONS ARE PASSED UPON A BEARING OF SOUTH 85°34' WEST BETWEEN CAPPED PIPE MONUMENTS LOCATED AT THE NORTHEAST CORNER AND THE NORTH QUARTER CORNER OF SECTION 35, T. 13 S. R. 88 W., 6TH P.M.



LEGEND

- U.S. UTILITY EASEMENT
- ◆ BRASS CAPPED PIPE
- S.S.E. SNOW STORAGE EASEMENT
- DENOTES A NO. 6 REBAR WITH 4 SQUARE ZINC COATED METAL PLATE - '8785'
- DENOTES A NO. 6 REBAR WITH A ZINC COATED STEEL DISC STAMPED '8785'
- ▲ AVALANCHE HAZARD
- ▲ SNOWSLIDE HAZARD
- BUILDING ENVELOPE