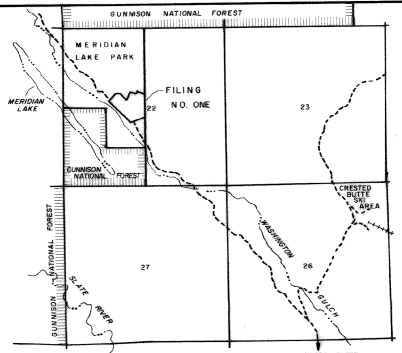


MERIDIAN LAKE PARK FILING NO. ONE

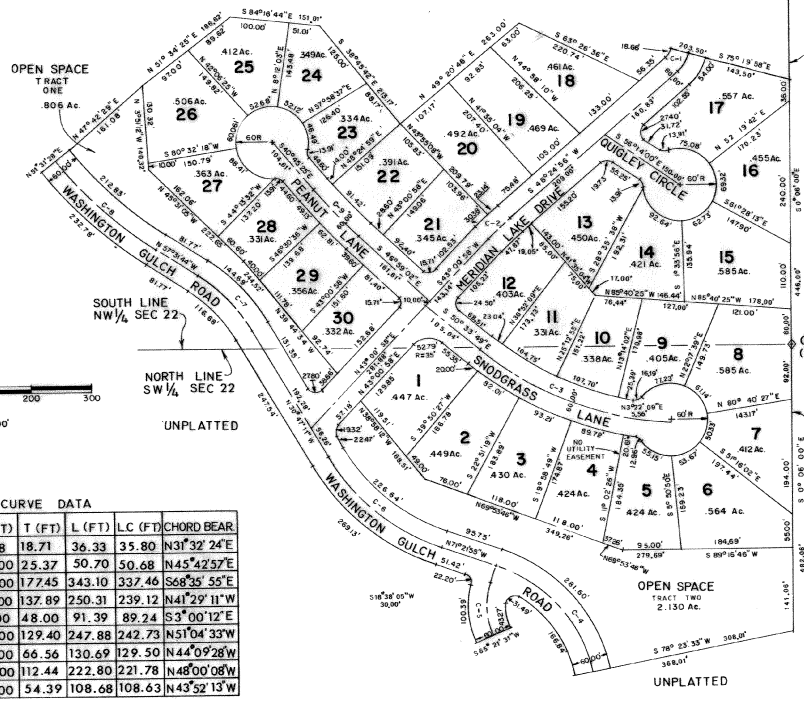
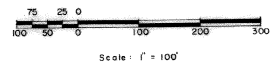
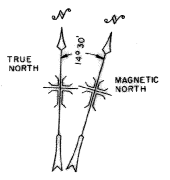


VICINITY MAP
1" = 2000'

Dedication
Know all men by these presents: that R.L. Sowers, and Meridian Lake, Inc., being the owners of the land described as follows:

A tract of land located in the west 1/2 of Section 22, Township 13 South, Range 86 West of the Sixth Principal Meridian, County of Gunnison, State of Colorado, containing 29.621 acres, more particularly described as follows:

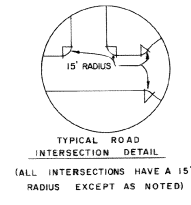
BEGINNING at the Center of said Section 22 from whence the N1/4 Corner of said Section 22 bears N00°00'00"W a distance of 2,652.50 feet; THENCE S00°00'00"E along the East line of the SW1/4 of said Section 22 a distance of 482.00 feet; THENCE S78°23'33"W a distance of 388.00 feet; THENCE on a curve to the left a distance of 106.84 feet, said curve having a radius of 210.00 feet and a chord which bears N34°22'05"W a distance of 162.49 feet; THENCE on a curve to the left a distance of 31.40 feet, said curve having a radius of 15.00 feet and a chord which bears S62°44'13"W a distance of 26.02 feet; THENCE on a curve to the left a distance of 41.21 feet, said curve having a radius of 31.00 feet and a chord which bears S11°31'09"E a distance of 43.26 feet; THENCE on a curve to the left a distance of 60.00 feet; THENCE on a curve to the right a distance of 100.39 feet, said curve having a radius of 151.00 feet and a chord which bears S15°35'44"W a distance of 90.55 feet; THENCE on a curve to the left a distance of 62.00 feet, said curve having a radius of 15.00 feet and a chord which bears N28°57'27"W a distance of 20.23 feet; THENCE N1°21'55"W a distance of 51.43 feet; THENCE on a curve to the right a distance of 239.13 feet, said curve having a radius of 300.00 feet and a chord which bears N51°04'33"W a distance of 263.54 feet; THENCE N30°47'11"W a distance of 247.55 feet; THENCE on a curve to the left a distance of 116.69 feet, said curve having a radius of 250.00 feet and a chord which bears S44°05'28"W a distance of 115.63 feet; THENCE N57°31'44"W a distance of 81.77 feet; THENCE on a curve to the right a distance of 232.78 feet, said curve having a radius of 300.00 feet and a chord which bears N48°00'00"W a distance of 231.13 feet; THENCE N51°31'28"E a distance of 60.00 feet; THENCE N47°42'29"E a distance of 161.00 feet; THENCE N51°34'25"E a distance of 186.62 feet; THENCE S84°14'44"E a distance of 131.91 feet; THENCE S38°45'42"E a distance of 213.17 feet; THENCE S49°00'45"E a distance of 263.00 feet; THENCE S83°28'39"E a distance of 229.74 feet; THENCE N48°24'56"E a distance of 56.35 feet; THENCE on a curve to the left a distance of 18.66 feet, said curve having a radius of 31.58 feet and a chord which bears N31°32'29"E a distance of 18.29 feet; THENCE S15°19'58"E a distance of 203.50 feet, more or less, to a point on the East line of the NW1/4 of said Section 22; THENCE S00°00'00"E along the East line of the NW1/4 of said Section 22 a distance of 446.00 feet, more or less, to the POINT OF BEGINNING;



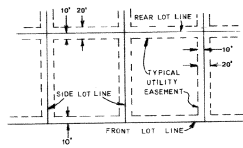
CENTER LINE CURVE DATA

CURVE NO.	I	R (FT)	T (FT)	L (FT)	LC (FT)	CHORD BEAR
1	83°44'54"	61.68	18.71	36.33	35.80	N31°32'24"E
2	5°23'58"	538.00	25.37	50.70	50.68	N45°42'57"E
3	36°04'11"	545.00	177.45	343.10	337.46	S68°35'55"E
4	59°45'29"	240.00	137.89	250.31	239.12	N41°09'11"W
5	43°16'33"	121.00	48.00	91.39	89.24	S3°00'12"E
6	40°34'44"	350.00	129.40	247.88	242.73	N51°04'33"W
7	26°44'32"	280.00	66.56	130.69	129.50	N44°09'28"W
8	19°03'12"	670.00	112.44	222.80	221.78	N48°00'08"W
9	6°13'37"	1000.00	54.39	108.68	108.63	N43°32'13"W

NUMBER OF LOTS : 30
AREA FILING NO ONE : 20.621 ACRES
AREA ROADS : 4.673 ACRES
AREA OPEN SPACE : 2.936 ACRES



TYPICAL ROAD INTERSECTION DETAIL
(ALL INTERSECTIONS HAVE A 15' RADIUS EXCEPT AS NOTED)



TYPICAL UTILITY EASEMENT
TYPICAL FOR ALL LOTS EXCEPT SIDE LOT LINE BETWEEN LOTS 4 & 5. ALL OPEN SPACE AVAILABLE AS A UTILITY EASEMENT.

EAST LINE NW 1/4 SEC 22
(US - GLO BRASS CAP)
UNPLATTED
EAST LINE SW 1/4 SEC 22
CENTER SEC 22 (MERRICK & CO PIN)
UNPLATTED

In Gunnison County, Colorado under the name and style of MERIDIAN LAKE PARK, FILING NO. ONE, has laid out, platted and subdivided same as shown on this plat, and by these presents does herein convey to the county of Gunnison, State of Colorado, the streets, alleys, roads, and other public areas as shown hereon and hereby dedicate these portions of land labeled as easements for the installation and maintenance of public utilities as shown hereon.

In witness whereof, the said R.L. Sowers, and Meridian Lake, Inc., has caused this to be hereunto subscribed this 22nd day of July, A.D., 1973.

By R.L. Sowers
R.L. Sowers
Meridian Lake, Inc.
William J. Lacy, President

**PLAT OF
MERIDIAN LAKE PARK
FILING NO. ONE
NW 1/4 AND SW 1/4 SEC. 22
T13S, R86W, 6th PM.
GUNNISON COUNTY, COLORADO**

PREPARED BY
**MERRICK & COMPANY
CONSULTING ENGINEERS
DENVER, COLORADO**
2-90072
JULY 5, 1973

Recordation of Protective Covenants
Protective covenants recorded in
Book Number 413 Page Number 433

Notarial
State of Colorado
County of Gunnison
I, John J. Bowers, Notary Public, do hereby certify that the foregoing instrument was acknowledged before me this 22 day of July, A.D., 1973, by R.L. Sowers,
My commission expires on July 22, 1975
Witness my hand and official seal
John J. Bowers
Notary Public

State of Colorado
County of Gunnison
I, John J. Bowers, Notary Public, do hereby certify that the foregoing instrument was acknowledged before me this 22 day of July, A.D., 1973, by Meridian Lake, Inc., William J. Lacy, President.
My commission expires on June 22, 1975
Witness my hand and official seal
John J. Bowers
Notary Public

Attorney's Opinion
I, Charles Alexander, being an Attorney-at-Law duly licensed to practice before courts of record in the State of Colorado, do hereby certify that I have examined the title to all lands herein dedicated and shown upon this plat and that title to said lands is in the dedication free and clear of all liens, taxes, and encumbrances, except those of trust given for the use of Evans Products Company and William J. Lacy and Rex D. Frates.

Dated this 22 day of July, A.D., 1973.
Charles Alexander
Charles Alexander, Attorney-at-Law

Land Surveyor's Certificate
I, Clifford E. Anderson, being a registered land surveyor in the State of Colorado, do hereby certify that this plat of MERIDIAN LAKE PARK, FILING NO. ONE, was made by me and under my supervision and that it is accurate to the best of my knowledge.

Dated this 23 day of July, A.D., 1973.
Clifford E. Anderson (Seal)
Colorado Registration Number 10843

Land Surveyor's Certificate
I, Edgar F. Benner, Jr., being a registered land surveyor in the State of Colorado, do hereby certify that this plat of MERIDIAN LAKE PARK, FILING NO. ONE, was made by me and under my supervision and that it is accurate to the best of my knowledge. Steel pins and/or brass cap monuments were set at all boundary corners.

Dated this 22 day of July, A.D., 1973.
Edgar F. Benner, Jr. (Seal)
Colorado Registration Number 9476

Gunnison County Planning Commission Approval
The Planning Commission of Gunnison County, Colorado does hereby authorize and approve this plat of the above subdivision at a meeting of said commission held on this 22 day of July, A.D., 1973.

Charles Alexander
Board of County Commissioners Approval

The within plat of Meridian Lake Park, Filing No. One is approved for filing this 18 day of August, 1973. The dedication of the public ways shown hereon are accepted by the County of Gunnison, State of Colorado, subject to the condition that said county shall undertake the maintenance of said public ways only after construction of said public ways has been satisfactorily completed to the county specifications, by the subdivider, and a resolution of the board accepting the same has been adopted and placed on record.

Board of County Commissioners
Gunnison County, Colorado
By Charles Alexander
Chairman
Attest: William J. Lacy
County Clerk

Gunnison County Clerk and Recorder's Acceptance
This plat was accepted for filing in the office of the clerk and recorder of Gunnison County, Colorado, on this 27 day of July, A.D., 1973.

Book Number _____ Page Number _____
Reception Number 22823 Time 10:00 AM Date July 27, 1973
William J. Lacy
County Clerk