

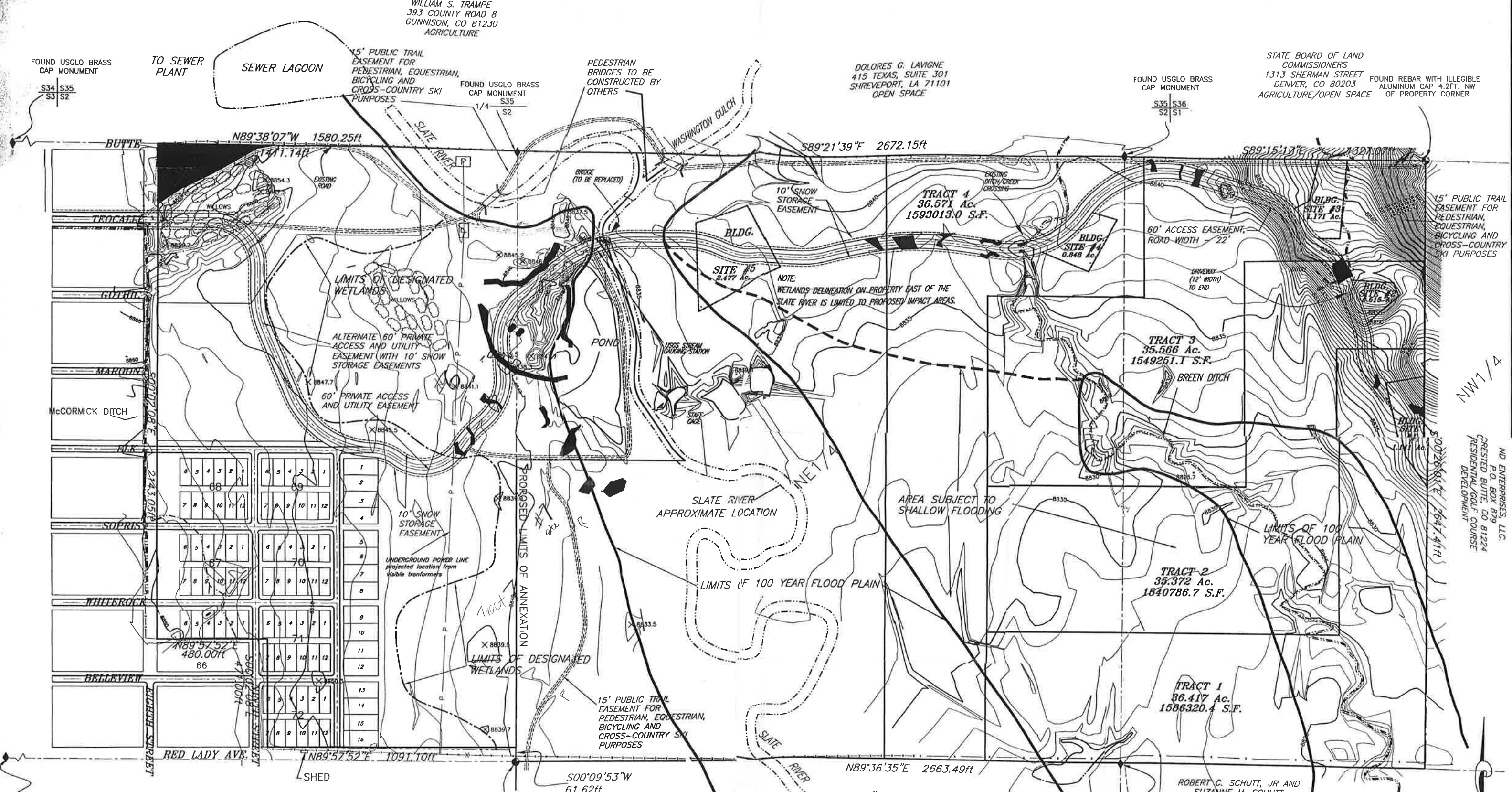
WILLIAM S. TRAMPE
393 COUNTY ROAD 8
GUNNISON, CO 81230
AGRICULTURE

DOLORES G. LAVIGNE
415 TEXAS, SUITE 301
SHREVEPORT, LA 71101
OPEN SPACE

STATE BOARD OF LAND COMMISSIONERS
1313 SHERMAN STREET
DENVER, CO 80203
AGRICULTURE/OPEN SPACE

FOUND USGLO BRASS CAP MONUMENT
S34 S35 S3 S2

FOUND USGLO BRASS CAP MONUMENT
S35 S36 S2 S1



1/4 S3 S2
FOUND USGLO BRASS CAP MONUMENT

LEGEND:

X	SPOT ELEVATION
- - -	FENCE
—	BRIDGE
⊙	MONITORING WELL
⊕	SEWER MANHOLE
◆	SECTION MONUMENT
⊕	FIRE HYDRANT
—	PROPERTY LINE - SUBJECT PROPERTY
—	CONTOUR LINE - 2' INTERVAL
- - -	UNDERGROUND POWER LINE
▨	WETLANDS AREA
▨	AFFORDABLE HOUSING LOT

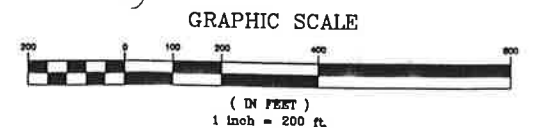
CENTER 1/4 SECTION 2
FOUND REBAR WITH ALUMINUM CAP "LS 11250"
TOWN OF CRESTED BUTTE
P.O. BOX 39
CRESTED BUTTE, CO 81224
AGRICULTURE/OPEN SPACE

TOWN OF CRESTED BUTTE
P.O. BOX 39
CRESTED BUTTE, CO 81224
AGRICULTURE/OPEN SPACE

ROBERT C. SCHUTT, JR AND SUZANNE M. SCHUTT
1306 WOOD AVENUE
COLORADO SPRINGS, CO 80903
SINGLE FAMILY RESIDENCE

SILVER SAGE PROPERTY OWNERS ASSOCIATION
P.O. BOX 713
CRESTED BUTTE, CO 81224
RESIDENTIAL SUBDIVISION COMMON AREA

GENERAL NOTE: ELEVATIONS RELATIVE TO BRASS CAP BENCH MARK "Z-157" ON SOUTH SIDE OF OLD CRESTED BUTTE ELEMENTARY SCHOOL WITH A PUBLISHED ELEVATION OF 8885.34' ABOVE MEAN SEA LEVEL.



ENGINEERS SURVEYORS
SCHMUESER GORDON MEYER INC.
118 W. 6th Street, Suite 200
CRESTED BUTTE, CO 81224

MCCORMICK RANCH

NUM-BER	REVISION	DATE	BY
1	Revise lots, road alignment, trails	2/9/99	dad

SITE

Job No. 96123
Drawn by: DSD
Date: 12/18/98