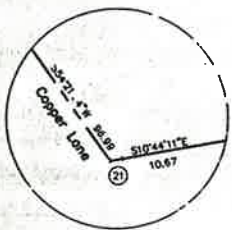


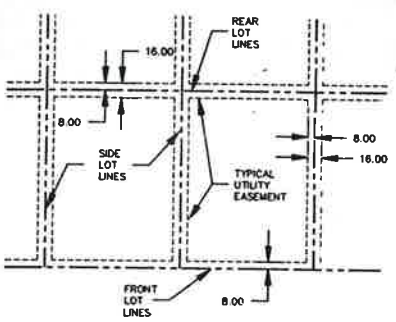
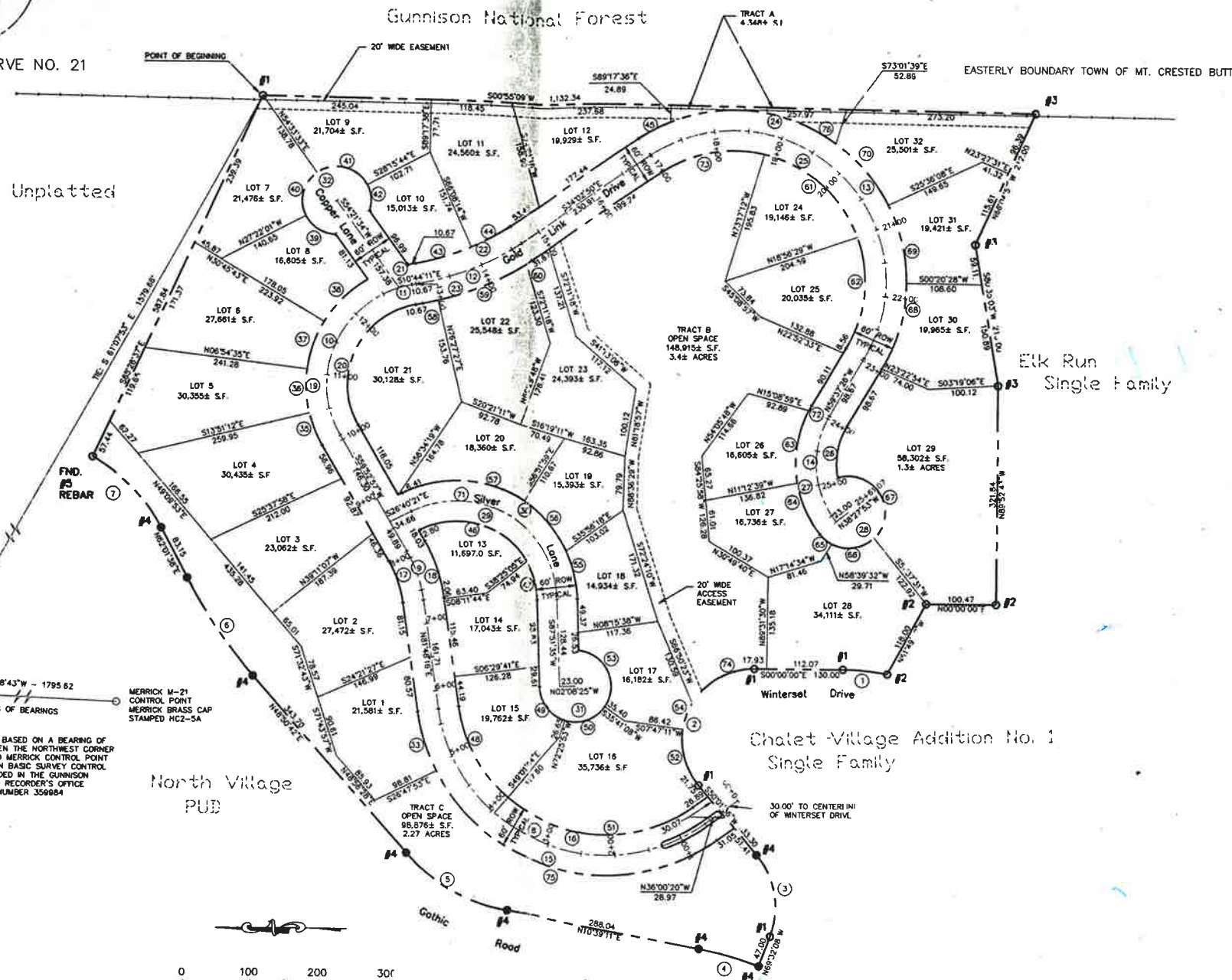
CURVE TABLE

CURVE	DELTA	RADIUS	BEARING	CHORD	LENGTH
1	111.400°	330.00	S04°28'43"W	64.80	64.70
2	129.582°	105.00	N64°56'17"W	190.30	238.18
3	129.582°	105.00	S59°44'24"E	190.30	238.18
4	09.484°	533.88	N15°33'55"E	120.78	126.50
5	281.131°	280.00	S29°44'24"E	170.11	174.52
6	130.256°	280.00	N59°28'10"E	174.47	174.88
7	119.483°	280.00	S29°44'24"E	170.11	174.52
8	119.483°	280.00	N59°28'10"E	174.47	174.88
9	119.483°	280.00	S29°44'24"E	170.11	174.52
10	119.483°	280.00	N59°28'10"E	174.47	174.88
11	07.201°	150.00	N14°24'18"E	18.18	18.71
12	23.183°	300.00	S22°27'21"E	161.83	162.74
13	23.183°	300.00	N44°56'21"E	233.99	246.30
14	23.183°	300.00	S22°27'21"E	161.83	162.74
15	117.283°	280.00	S29°44'24"E	170.11	174.52
16	117.283°	280.00	N59°28'10"E	174.47	174.88
17	117.283°	280.00	S29°44'24"E	170.11	174.52
18	117.283°	280.00	N59°28'10"E	174.47	174.88
19	86.714°	180.00	N79°28'25"E	253.12	260.72
20	107.102°	150.00	N44°56'21"E	180.85	228.00
21	107.102°	150.00	N10°49'22"E	190.85	228.00
22	23.183°	370.00	S22°27'21"E	146.50	150.53
23	23.183°	370.00	S22°27'21"E	173.74	174.85
24	23.183°	370.00	N44°56'21"E	248.58	255.04
25	23.183°	370.00	S22°27'21"E	146.50	150.53
26	15.252°	192.00	N43°08'25"E	374.47	379.48
27	41.542°	108.00	N80°24'40"W	78.66	78.37
28	41.542°	108.00	N80°24'40"W	78.66	78.37
29	41.542°	108.00	N80°24'40"W	78.66	78.37
30	114.313°	180.00	N79°28'25"E	253.12	260.72
31	114.313°	180.00	N79°28'25"E	253.12	260.72
32	286.737°	50.00	S35°35'28"E	60.00	249.81
33	18.472°	280.00	S22°27'21"E	81.45	81.88
34	18.472°	280.00	S22°27'21"E	173.74	174.85
35	18.472°	280.00	N44°56'21"E	248.58	255.04
36	18.472°	280.00	S22°27'21"E	81.45	81.88
37	23.251°	170.00	N76°17'15"E	65.40	71.29
38	23.251°	170.00	N76°17'15"E	65.40	71.29
39	23.251°	170.00	N76°17'15"E	65.40	71.29
40	81.412°	50.00	N13°14'03"E	75.11	84.87
41	81.412°	50.00	N13°14'03"E	75.11	84.87
42	45.534°	50.00	N64°42'00"E	35.72	36.76
43	130.725°	370.00	S17°17'59"E	84.58	84.77
44	107.102°	170.00	S29°44'24"E	85.65	85.77
45	12.000°	252.00	N33°02'22"E	59.74	59.84
46	85.362°	120.00	N16°17'51"E	163.59	179.99
47	28.253°	120.00	N73°33'49"E	56.26	59.88
48	40.449°	252.00	N45°00'00"E	88.54	88.46
49	71.535°	53.00	S51°52'23"E	62.23	68.51
50	71.535°	53.00	S51°52'23"E	62.23	68.51
51	71.535°	53.00	S51°52'23"E	62.23	68.51
52	48.036°	105.00	S74°04'50"E	85.60	85.18
53	118.522°	53.00	N64°53'09"E	91.27	109.86
54	107.102°	170.00	N76°17'15"E	65.40	71.29
55	23.251°	170.00	N76°17'15"E	65.40	71.29
56	23.251°	170.00	N76°17'15"E	65.40	71.29
57	31.303°	180.00	N48°53'18"E	87.75	88.99
58	31.303°	180.00	N48°53'18"E	87.75	88.99
59	31.303°	180.00	N48°53'18"E	87.75	88.99
60	01.193°	430.00	S33°23'01"E	8.96	9.96
61	01.193°	430.00	S33°23'01"E	8.96	9.96
62	01.193°	430.00	S33°23'01"E	8.96	9.96
63	37.343°	188.00	N81°18'18"W	108.21	110.18
64	28.253°	188.00	S65°43'17"E	82.34	83.19
65	28.253°	188.00	S65°43'17"E	82.34	83.19
66	28.253°	188.00	S65°43'17"E	82.34	83.19
67	16.254°	53.00	N59°00'01"E	103.00	141.45
68	16.254°	53.00	N59°00'01"E	103.00	141.45
69	27.008°	252.00	N76°48'09"E	118.27	118.39
70	27.008°	252.00	N76°48'09"E	118.27	118.39
71	114.313°	150.00	N59°47'24"W	104.33	299.84
72	02.533°	168.00	N61°04'14"E	8.48	8.48
73	47.013°	192.00	N10°32'01"W	153.20	157.59
74	59.544°	105.00	N59°47'24"W	104.33	108.19
75	59.544°	105.00	N59°47'24"W	104.33	108.19
76	58.043°	252.00	S07°00'18"W	244.84	255.43

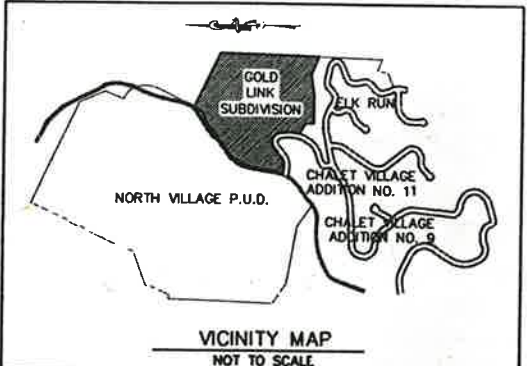


PLAT OF  
**GOLD LINK SUBDIVISION**  
LOCATED IN SECTION 24, T. 13 S., R. 86 W., 6th P.M.,  
TOWN OF MT. CRESTED BUTTE, COUNTY OF GUNNISON  
STATE OF COLORADO

DETAIL OF CURVE NO. 21  
NOT TO SCALE



TYPICAL UTILITY EASEMENT DETAIL



- LEGEND**
- #1 FND. #5 REBAR w/CAP LS 22100
  - #2 FND. #5 REBAR w/CAP LS 11250
  - #3 FND. #5 REBAR w/CAP LS 15029
  - #4 SET #5 REBAR w/CAP LS 13155



*Abrahamson*  
2022

ISSUE	DESCRIPTION	DATE	REFERENCE
<b>PLAT OF GOLD LINK SUBDIVISION</b>			
SCALE	AS NOTED		
DRAWN	REESE		
CHECKED	CARR		
APPROVED	ABRAHAMSON		



JOB 058-8222, DATE 3/11/22, SH 2 OF 2