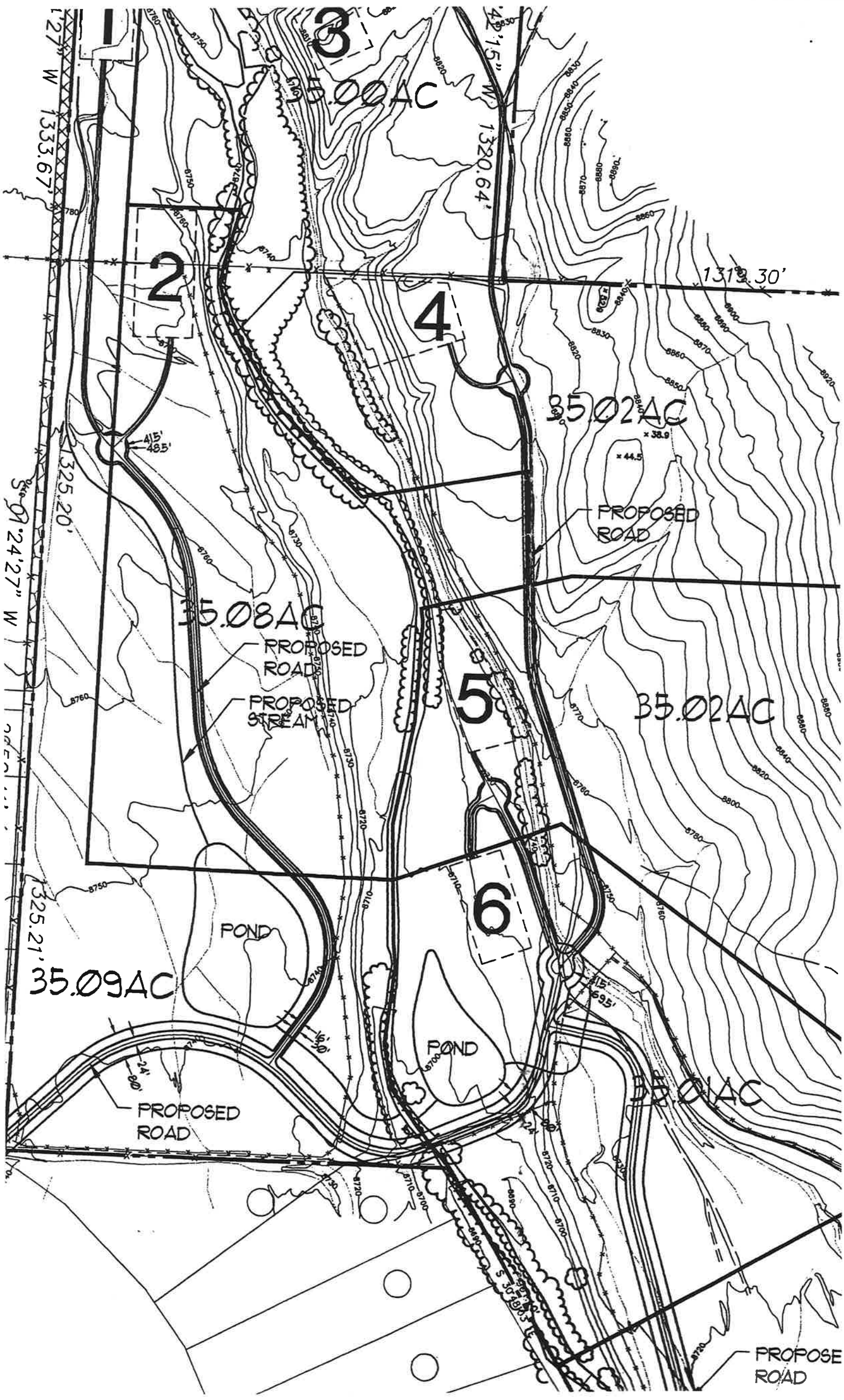


Access



35.00 AC

2

4

35.02 AC
x 38.9
x 44.5

PROPOSED ROAD

35.08 AC

PROPOSED ROAD

PROPOSED STREAM

5

35.02 AC

6

35.09 AC

POND

POND

35.01 AC

PROPOSED ROAD

PROPOSED ROAD

1333.67' W
1325.20' W
1325.21' W

1320.64' W

1319.30' W

415' 485'

415' 695'

415' 695'

1325.21' W

24' 80'

24' 80'

24' 80'

24' 80'

24' 80'

24' 80'

