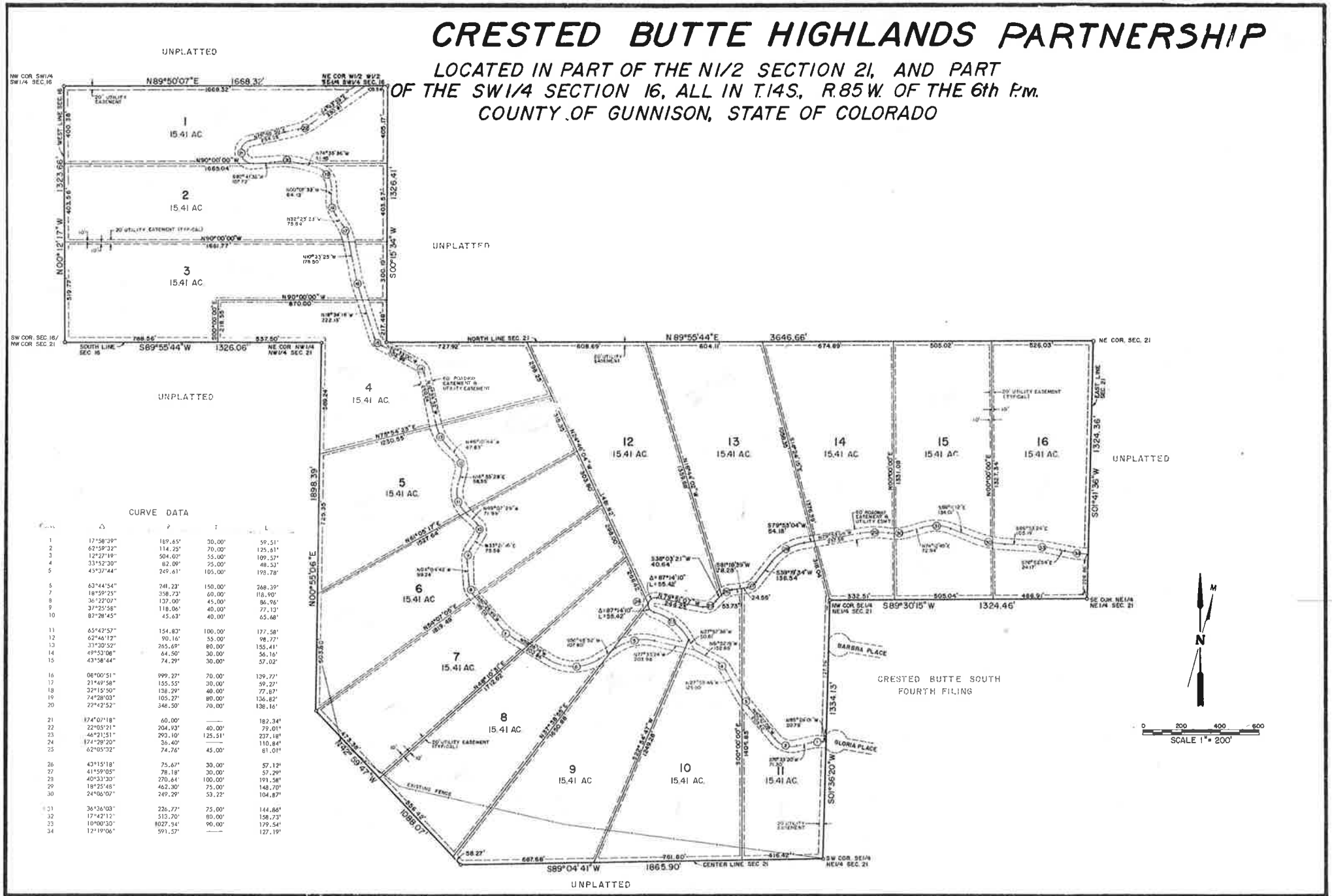


CRESTED BUTTE HIGHLANDS PARTNERSHIP

LOCATED IN PART OF THE N1/2 SECTION 21, AND PART OF THE SW1/4 SECTION 16, ALL IN T.14S, R.85W OF THE 6th P.M. COUNTY OF GUNNISON, STATE OF COLORADO



CURVE DATA

Station	Δ	P	T	L
1	17°58'39"	189.65'	30.00'	59.51'
2	62°59'32"	114.25'	70.00'	125.81'
3	12°27'19"	504.00'	55.00'	109.23'
4	33°52'30"	82.09'	75.00'	48.23'
5	43°37'44"	245.61'	105.00'	193.78'
6	63°44'54"	241.23'	150.00'	248.39'
7	18°59'25"	358.73'	60.00'	116.90'
8	36°22'07"	137.00'	45.00'	86.56'
9	37°25'56"	116.06'	40.00'	77.12'
10	82°28'45"	45.63'	40.00'	65.68'
11	65°42'57"	154.83'	100.00'	177.58'
12	62°46'12"	90.16'	55.00'	98.77'
13	33°30'52"	265.69'	80.00'	155.41'
14	49°53'08"	84.50'	30.00'	56.16'
15	43°58'44"	74.29'	30.00'	57.02'
16	08°00'51"	999.27'	70.00'	129.77'
17	21°49'58"	155.55'	30.00'	59.27'
18	32°15'50"	138.29'	40.00'	77.67'
19	74°28'03"	105.27'	80.00'	136.82'
20	22°42'52"	346.50'	70.00'	138.16'
21	174°02'18"	60.00'	—	182.34'
22	22°05'21"	204.93'	40.00'	79.01'
23	44°21'51"	293.10'	125.51'	227.18'
24	174°28'20"	36.40'	—	110.84'
25	62°05'32"	74.76'	45.00'	81.01'
26	43°15'18"	75.67'	30.00'	57.12'
27	41°59'05"	78.18'	30.00'	57.29'
28	40°33'30"	276.84'	100.00'	191.58'
29	187°25'46"	492.30'	75.00'	148.70'
30	24°06'07"	249.29'	53.22'	104.87'
31	36°16'03"	226.77'	75.00'	144.86'
32	17°42'12"	513.70'	80.00'	158.73'
33	10°00'30"	1027.94'	90.00'	179.54'
34	12°19'06"	591.57'	—	127.19'

