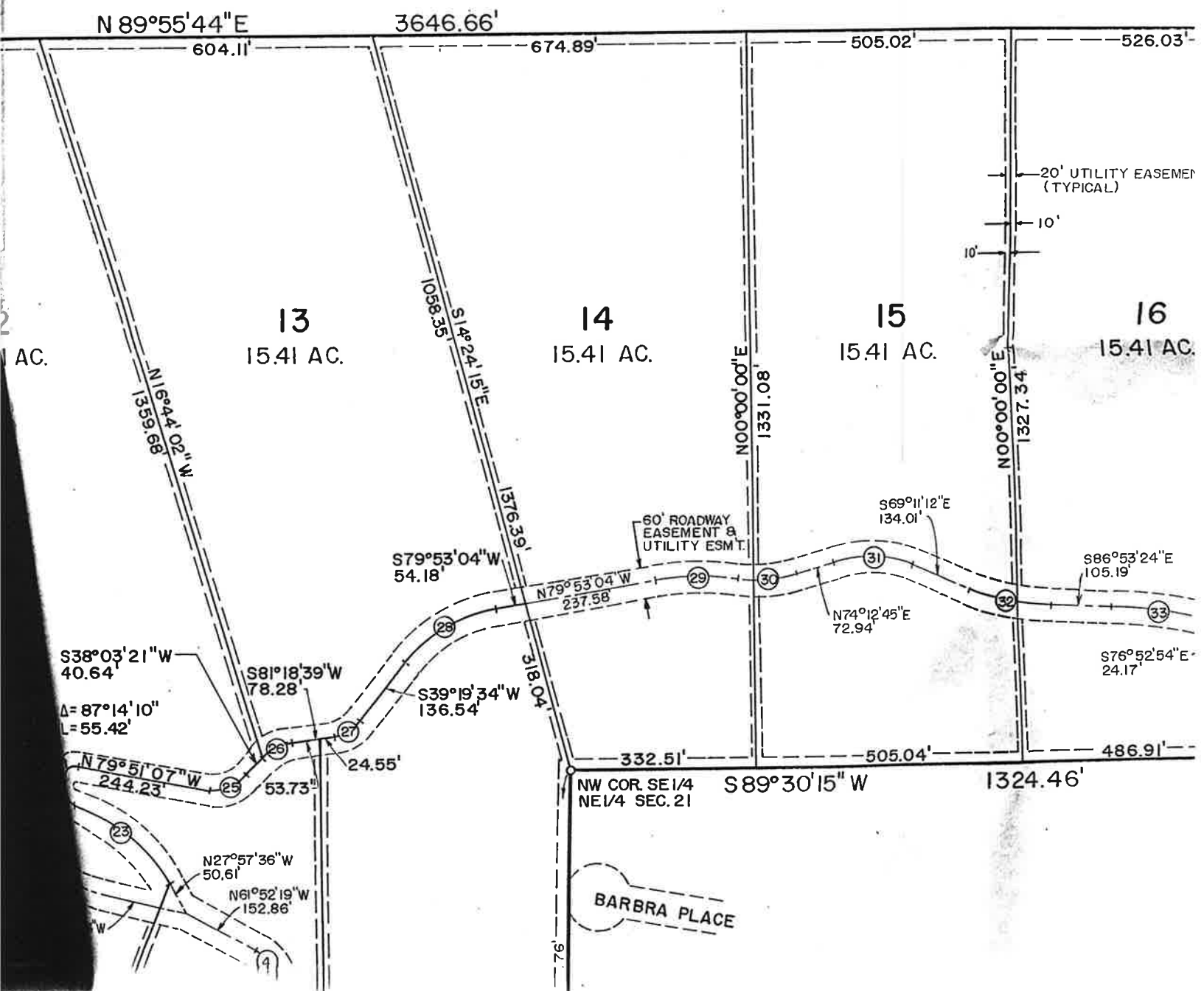


BUTTE HIGHLANDS PA

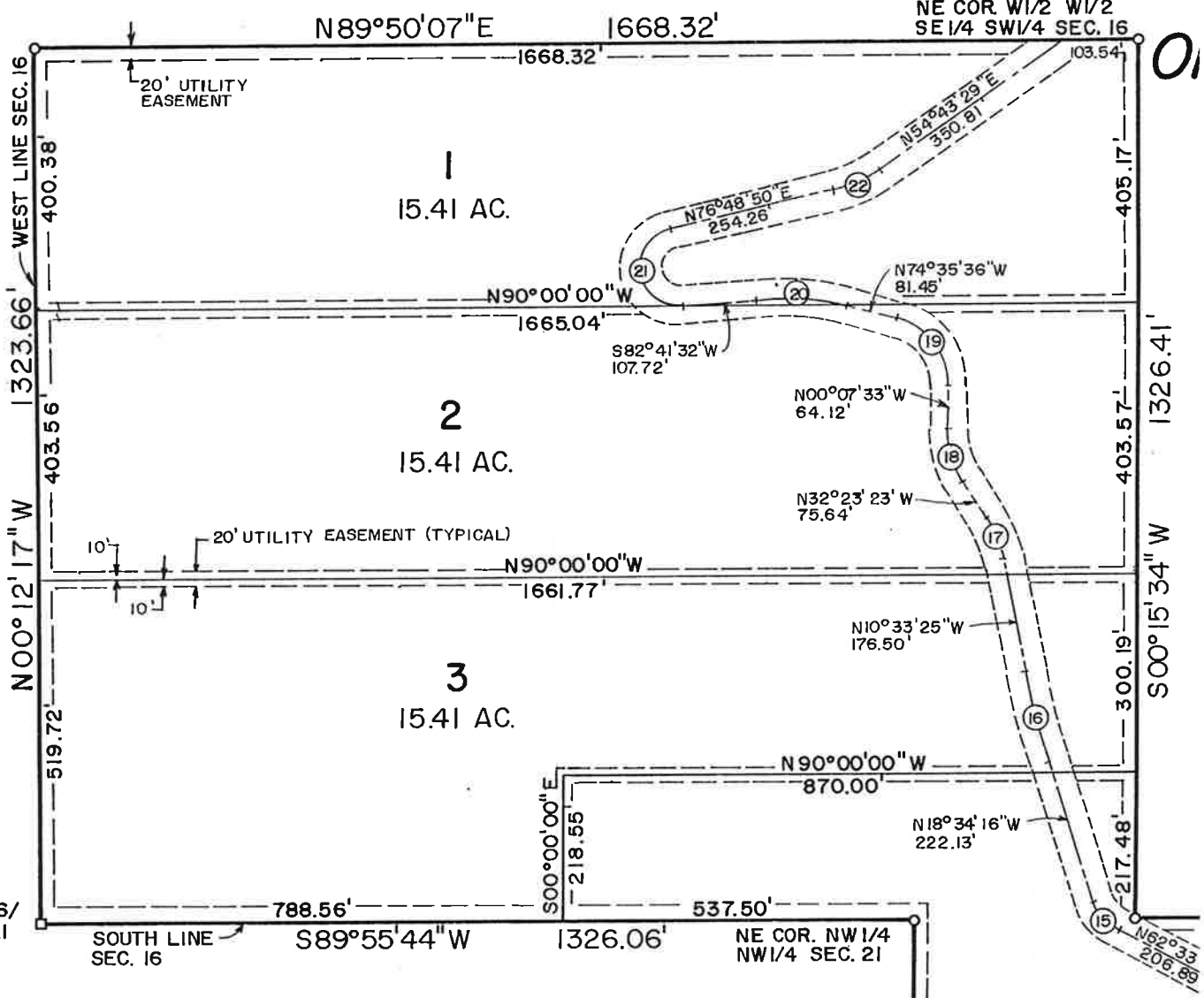
F THE N1/2 SECTION 21, AND PART
16, ALL IN T.14S., R.85W. OF THE 6th P.M.
ANNISON, STATE OF COLORADO



UNPLATTED

NW COR. SW1/4
SW1/4 SEC. 16

NE COR. W1/2 W1/2
SE1/4 SW1/4 SEC. 16



SW COR. SEC. 16/
NW COR. SEC. 21

NE COR. NW1/4
NW1/4 SEC. 21

UNPLATTED

CURVE DATA

Curve	Δ	R	T	L
1	17°58'39"	189.65'	30.00'	59.51'
2	62°59'32"	114.25'	70.00'	125.61'
3	12°27'19"	504.02'	55.00'	109.57'
4	33°52'30"	82.09'	25.00'	48.53'
5	45°37'44"	249.61'	105.00'	198.78'
6	63°44'54"	241.23'	150.00'	268.39'
7	18°59'25"	358.73'	60.00'	118.90'
8	26°22'07"	137.00'	45.00'	86.96'
9	37°25'50"	118.06'	40.00'	77.13'
10	82°28'45"	45.63'	40.00'	65.68'
11	65°42'57"	154.83'	100.00'	177.58'
12	62°46'12"	90.16'	55.00'	98.77'
13	33°30'52"	265.69'	80.00'	155.41'
14	49°53'08"	64.50'	30.00'	56.16'
15	43°58'44"	74.29'	30.00'	57.02'

N00°55'06"E

60380

COUNTY OF GUNNISON,

